

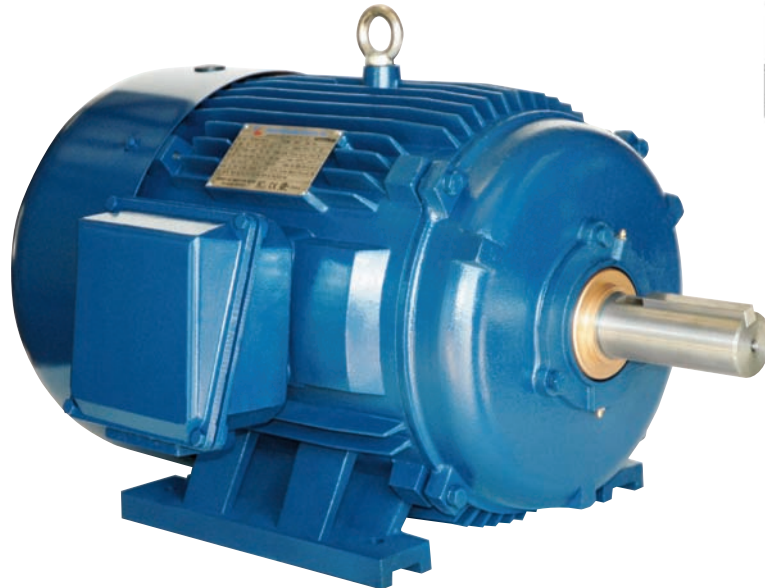
North American Electric, Inc.

"Your Source for a Complete Line of Electric Motors and Controls"

General Purpose Motors

INVERTER DUTY

(1-500 Horse Power)



**NEMA
Premium[®]**

Premium Crusher Design Motors

INVERTER RATED

(1-500 Horse Power)



Mission Statement

To provide the United States market for industrial motors and controls with products which meet or exceed customer expectations for quality, performance, and reliability at the lowest possible cost and delivered in accordance with the customer's schedule, through our authorized distributor network.

Company History

North American Electric, Inc. is a wholesale supplier of Special Purpose and General Purpose, AC electric motors and controls. We take pride in supplying high performance, high quality products at extremely competitive prices throughout the United States. Donald E. Hackman, Sr. and David E. Hackman founded the company in October of 1993. The company's primary focus is sourcing quality electric motors from various manufacturers, both locally and internationally, and distributing them throughout the United States through local distributors and service centers. Our nationwide distributor and service network offer strong local support for our products by providing critical logistical, technical and maintenance support as well as fast, friendly customer service.

WARRANTY POLICY

All motors sold by North American Electric, Inc. are warranted to be free from defects in material and workmanship. The warranty is 24 months from the date of manufacture but no less than 18 months from date of invoice. Also, all motors installed within 24 months from date of manufacture will be warranted for no less than 12 months from the date the motor is installed. North American Electric, Inc. shall, at its option and expense, either repair or replace any such motor or part, which is defective within the warranty period. To be covered under warranty, any motor must have at all times been operated or used under normal operating conditions for which the motor was designed.

In the event of warranty claims, North American Electric, Inc. must be notified promptly following any motor failure. The motor should be sent to a North American Electric, Inc. authorized service center to diagnose the cause of failure. After this examination, a determination will be made if the failure was due to defective material and/or workmanship. If the failure was due to defective material and/or workmanship, North American Electric, Inc. will replace or repair the motor.

North American Electric's liability under this warranty or any other warranty whether expressed or implied in law or fact shall be limited to the repair or replacement of defective material and workmanship, and in no event shall North American Electric, Inc. be liable for consequential or indirect damages, including freight.

YOUR SOURCE FOR A COMPLETE LINE OF ELECTRIC MOTORS AND CONTROLS !!!

	<p><u>SINGLE PHASE, 56C FRAME, TEFC</u> 1/3-2 HP 2,4 POLE HIGH STARTING TORQUES MANUAL OVERLOAD PROTECTION (OPTIONAL) CAPACITOR START / CAPACITOR RUN DESIGN ROLLED STEEL FRAME CONSTRUCTION IP55 PROTECTION-REMOVABLE FEET</p>		<p><u>NEMA PREMIUM EFFICIENCY INVERTER DUTY MOTORS</u> MEETS OR EXCEEDS NEMA PREMIUM EFFICIENCY LEVELS QUALIFIES FOR ENERGY EFFICIENCY REBATES</p>
	<p><u>SINGLE PHASE, FARM DUTY, TEFC</u> 1/3-10 HP 4 POLE HIGH STARTING TORQUES MANUAL OVERLOAD PROTECTION (1/3 THRU 5 HP) CAPACITOR START / CAPACITOR RUN DESIGN ROLLED STEEL FRAMES CAST IRON ENDBELLS</p>		<p><u>PREMIUM CRUSHER DESIGN MOTORS</u> 1-500 HP 4,6,8 POLE NEMA DESIGN C HIGH STRENGTH 4140 GRADE STAINLESS STEEL SHAFT 586/7U FRAME HEAVY DUTY CAST IRON CONSTRUCTION (INCLUDING FAN COVER) BEARING SIZES: DE=NU324 ODE=6324</p>
	<p><u>SINGLE PHASE OPEN DRIPPROOF</u> 3,5 HP 4 POLE HIGH STARTING TORQUES CAPACITOR START / CAPACITOR RUN DESIGN ROLLED STEEL FRAME CONSTRUCTION CAST IRON ENDBELLS</p>		<p><u>PREMIUM EFFICIENCY EXPLOSION PROOF MOTORS</u> 1-300 HP 2,4,6 POLE ALL MOTORS MEET OR EXCEED UL 674 SPECIFICATION AS REQUIRED BY OSHA FOR INSTALLATION AND USE IN HAZARDOUS LOCATIONS. CLASS I, DIVISION I, GROUPS C&D AND CLASS II, DIVISION I, GROUPS E,F AND G UL CERTIFIED - FILE E228654 CSA + "C" + "US" - CANADIAN STANDARD ISO9001</p>
	<p><u>THREE PHASE, 56C FRAME, TEFC</u> 1/3-3 HP 2,4 POLE HIGH EFFICIENCY DESIGN GENERAL PURPOSE MOTORS ROLLED STEEL FRAME CONSTRUCTION, ALUMINUM ENDBELLS IP55 PROTECTION REMOVABLE FEET</p>		<p><u>OIL WELL PUMP MOTORS, TEFC</u> 3-150 HP 6 POLE NEMA DESIGN D HIGH SLIP(5% TO 8% SLIP) SPECIAL PURPOSE OIL WELL PUMP MOTORS HEAVY DUTY CAST IRON FRAME CONSTRUCTION</p>
	<p><u>THREE PHASE, TEFC ROLLED STEEL MOTORS</u> PREMIUM EFFICIENCY DESIGN-GENERAL PURPOSE, LIGHT WEIGHT ROLLED STEEL FRAME</p>		<p><u>PREMIUM EFFICIENCY ALUMINUM MOTORS</u> 1-10 HP 2,4 POLE HIGH EFFICIENCY DESIGN GENERAL PURPOSE, THREE PHASE, TEFC MOTORS LIGHT WEIGHT ALUMINUM FRAME</p>
	<p><u>THREE PHASE OPEN DRIPPROOF</u> 1-15 HP 2,4 POLE PREMIUM EFFICIENCY DESIGN GENERAL PURPOSE MOTORS ROLLED STEEL FRAME CONSTRUCTION, CAST IRON ENDBELLS</p>		<p><u>VERTICAL HOLLOW SHAFT PUMP MOTORS</u> 10 HP - 250 HP, 4 POLE HIGH TORQUE - HIGH THRUST</p>
	<p><u>STAINLESS STEEL WASHDOWN DUTY MOTORS</u> 1/3 HP - 20HP 2,4,6 POLE IP 67 PROTECTION INVERTER DUTY</p>		<p><u>ELECTRIC MOTOR CONTROL</u> FULL VOLTAGE STARTERS SOFT STARTS INVERTERS PUMP PACKAGES</p>
			<p><u>MOTOR SLIDE BASES</u> AVAILABLE 56C THRU 505U</p>

PREMIUM EFFICIENT/INVERTER DUTY MOTORS

"Buy on Value Not on Price"



- **1-500 Horse Power**
- **3600, 1800, 1200 RPM**
- **Inverter Duty**
- **Approved by Department of Energy**



"Inverter Packages Available"

Totally Enclosed Fan Cooled Protection —Meets the IP55 Specification

Class F Insulation System with Class H VPI Epoxy Resin Protection

AC Inverter Duty —20:1 Variable and 10:1 Constant Torque

4140 Grade Steel Shaft on all Roller Bearing Applications with Radius Cut Shoulder

High Grade Silica Electrical Steel Core and Rotor with Extremely Low Core Losses

FC 200 Grade Cast Iron Frame with Solid Cast Iron Full Length Double Punched Feet

NEMA Design B with Design C Characteristics

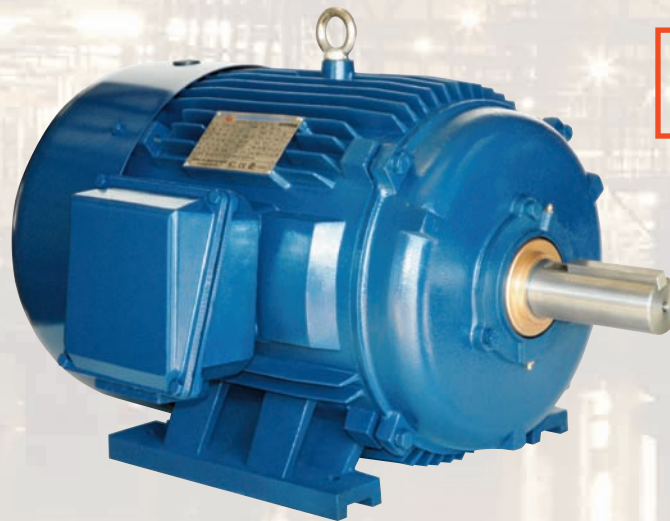
Heavy Gauge Steel Fan Covers, Cast Iron Fan Covers Available

Mechanical "V" Seal For Maximum Protection against Severe Environments

Cast Iron Conduit Box —Wiring Diagram on the Inside Cover

Oversized Bearings used on both Drive End and Opposite Drive End—at 440 Frames and Larger Roller Bearings are Standard—Ball Bearings Available

Greaseable Bearings on 250 Frames and Larger—All Greaseable Bearings have Grease Relief Ports



APPLICATIONS:

General Purpose Use on Pumps, Fans, Blowers, Compressors, Conveyors, Material Handling and Other Industrial Machinery Installed in Damp, Dusty or Dirty Environments.

PREMIUM EFFICIENT/INVERTER DUTY LIST PRICES



HP	RPM	FRAME	VOLTS	CATALOG NUMBER	LIST PRICE
1	1800	143T	208-230/460	PE143T-1-4	\$364
	1200	145T	208-230/460	PE145T-1-6	\$485
	900	182T	208-230/460	PE182T-1-8C*	\$638
1.5	3600	143T	208-230/460	PE143T-1.5-2	\$415
	1800	145T	208-230/460	PE145T-1.5-4	\$445
	1200	182T	208-230/460	PE182T-1.5-6	\$521
2	3600	184T	208-230/460	PE184T-1.5-8C*	\$794
	1800	145T	208-230/460	PE145T-2-2	\$446
	1200	184T	208-230/460	PE184T-2-6	\$613
3	3600	213T	208-230/460	PE213T-2-8C*	\$1,125
	1800	182T	208-230/460	PE182T-3-2	\$549
	1200	213T	208-230/460	PE213T-3-6	\$828
5	3600	215T	208-230/460	PE215T-3-8C*	\$1,231
	1800	184T	208-230/460	PE184T-5-2	\$680
	1200	215T	208-230/460	PE215T-5-6	\$1,088
7.5	3600	254T	208-230/460	PE254T-5-8C*	\$1,885
	1800	213T	208-230/460	PE213T-7-5-2	\$946
	1200	254T	208-230/460	PE254T-7-5-6	\$1,497
10	3600	256T	208-230/460	PE256T-7.5-8C*	\$2,075
	1800	215T	208-230/460	PE215T-10-2	\$1,066
	1200	256T	208-230/460	PE256T-10-6	\$1,897
15	3600	284T	208-230/460	PE284T-10-8C*	\$3,001
	1800	254T	208-230/460	PE254T-15-2	\$1,566
	1200	284T	208-230/460	PE284T-15-6	\$2,541
20	3600	286T	208-230/460	PE286T-10-8C*	\$3,884
	1800	256T	208-230/460	PE256T-20-2	\$1,915
	1200	286T	208-230/460	PE286T-20-6	\$3,020
25	3600	324T	208-230/460	PE324T-20-8C*	\$4,553
	1800	284TS	208-230/460	PE284TS-25-2	\$2,456
	1200	324T	208-230/460	PE324T-25-6	\$3,427
30	3600	326T	208-230/460	PE326T-25-8C*	\$5,114
	1800	286TS	208-230/460	PE286TS-30-2	\$2,638
	1200	326T	208-230/460	PE326T-30-6	\$4,112
40	3600	364T	208-230/460	PE364T-30-8C*	\$6,141
	1800	324TS	208-230/460	PE324TS-40-2	\$3,377
	1200	364T	208-230/460	PE364T-40-6	\$5,094
50	3600	365T	208-230/460	PE365T-40-8C*	\$7,624
	1800	326TS	208-230/460	PE326TS-50-2	\$4,273
	1200	365T	208-230/460	PE365T-50-6	\$6,386
60	3600	404T	208-230/460	PE404T-50-8C*	\$9,001
	1800	364TS	208-230/460	PE364TS-60-2	\$5,990
	1200	404T	208-230/460	PE404T-60-6	\$7,035
75	3600	405T	208-230/460	PE405T-60-8C*	\$10,229
	1800	365TS	208-230/460	PE365TS-75-2	\$7,081
	1200	405T	208-230/460	PE405T-75-6	\$7,836
	3600	444T	208-230/460	PE444T-75-8C*	\$14,941

HP	RPM	FRAME	VOLTS	CATALOG NUMBER	LIST PRICE
100	3600	405TS	208-230/460	PE405TS-100-2	\$8,505
	1800	405T	208-230/460	PE405T-100-4	\$7,513
	1200	444T	208-230/460	PE444T-100-6	\$11,338
	900	445T	208-230/460	PE405T-100-8C*	\$16,096
125	3600	444TS	460	PE444TS-125-2	\$10,895
	1800	444T	460	PE444T-125-4	\$11,407
	1200	444T	460	PE444T-125-4-BB	\$11,407
	900	445T	460	PE444T-125-4-PWS	\$11,407
150	3600	445TS	460	PE445TS-150-2	\$13,055
	1800	445T	460	PE445T-150-4	\$12,102
	1200	445T	460	PE445T-150-4-BB	\$12,102
	900	447T	460	PE445T-150-4-PWS	\$12,102
200	3600	447TS	460	PE447TS-200-2	\$16,992
	1800	447T	460	PE447T-200-4	\$15,540
	1200	447T	460	PE447T-200-4-BB	\$15,540
	900	449T	460	PE449T-200-6	\$19,738
250	3600	449TS	460	PE449TS-250-2	\$26,468
	1800	449T	460	PE449T-250-4	\$19,750
	1200	449T	460	PE449T-250-4-BB	\$18,750
	900	449T	460	PE449T-250-4-PWS	\$18,750
300	3600	449TS	460	PE449T-250-6	\$21,168
	1800	587UZ	460	PE587UZ-250-6A	\$29,795
	1200	587U	460	PE587U-250-6C*	\$28,293
	900	587U	460	PE587U-250-8C*	\$44,318
350	3600	449TS	460	PE449TS-300-2	\$25,000
	1800	449T	460	PE449T-300-4	\$23,750
	1200	449T	460	PE449T-300-4-BB	\$23,750
	900	587UZ	460	PE449T-300-4-PWS	\$23,750
400	3600	587UZ	460	PE587UZ-300-4A	\$27,575
	1800	587U	460	PE587U-300-4C*	\$26,198
	1200	587U	460	PE449T-300-6	\$25,161
	900	587U	460	PE587UZ-300-6A	\$32,100
450	3600	587UZ	460	PE587U-300-6C*	\$30,572
	1800	587U	460	PE587U-300-8C*	\$46,006
	1200	587UZ	460	PE587UZ-350-4A	\$28,709
	900	587U	460	PE587U-350-4C*	\$27,342
500	3600	587UZ	460	PE587UZ-350-6A	\$33,105
	1800	587U	460	PE587U-350-6C*	\$31,529
	1200	587UZ	460	PE587UZ-400-4A	\$30,858
	900	587U	460	PE587U-400-4C*	\$29,389
550	3600	587UZ	460	PE587UZ-400-6A	\$35,775
	1800	587U	460	PE587U-400-6C*	\$34,071
	1200	587UZ	460	PE587UZ-450-4A	\$36,359
	900	587U	460	PE587U-450-4C*	\$37,413
600	3600	587UZ	460	PE587UZ-500-4A	\$39,608
	1800	587U	460	PE587U-500-4C*	\$37,628
	1200	587UZ	460	PE587UZ-500-6A	\$42,220

* EISA COMPLIANT - NEMA DESIGN C - CRUSHER DUTY MOTORS

* EISA COMPLIANT - NEMA DESIGN C - CRUSHER DUTY MOTORS

PREMIUM EFFICIENT/INVERTER DUTY WITH C-FACE LIST PRICES



HP	RPM	FRAME	VOLTS	CATALOG NUMBER	LIST PRICE
1	1800	143TC	208-230/460	PE143TC-1-4	\$382
	1200	145TC	208-230/460	PE145TC-1-6	\$509
1.5	3600	143TC	208-230/460	PE143TC-1.5-2	\$436
	1800	145TC	208-230/460	PE145TC-1.5-4	\$467
	1200	182TC	208-230/460	PE182TC-1.5-6	\$547
2	3600	184TC	208-230/460	PE184TC-1.5-8C*	\$794
	1800	145TC	208-230/460	PE145TC-2-2	\$468
	1200	184TC	208-230/460	PE184TC-2-6	\$644
3	3600	213TC	208-230/460	PE213TC-2-8C*	\$1,125
	1800	182TC	208-230/460	PE182TC-3-2	\$576
	1200	213TC	208-230/460	PE213TC-3-6	\$869
5	3600	215TC	208-230/460	PE215TC-3-8C*	\$1,231
	1800	184TC	208-230/460	PE184TC-5-2	\$714
	1200	215TC	208-230/460	PE215TC-5-6	\$1,142
7.5	3600	254TC	208-230/460	PE254TC-5-8C*	\$1,885
	1800	213TC	208-230/460	PE213TC-7.5-2	\$993
	1200	254TC	208-230/460	PE254TC-7.5-6	\$1,572
10	3600	256TC	208-230/460	PE256TC-7.5-8C*	\$2,075
	1800	215TC	208-230/460	PE215TC-10-2	\$1,119
	1200	256TC	208-230/460	PE256TC-10-6	\$1,992

HP	RPM	FRAME	VOLTS	CATALOG NUMBER	LIST PRICE
15	3600	254TC	208-230/460	PE254TC-15-2	\$1,644
	1800	254TC	208-230/460	PE254TC-15-2	\$1,631
20	3600	256TC	208-230/460	PE256TC-20-2	\$2,011
	1800	256TC	208-230/460	PE256TC-20-4	\$1,939
25	1800	284TC	208-230/460	PE284TC-25-4	\$2,389
30	1800	286TC	208-230/460	PE286TC-30-4	\$2,785
40	1800	324TC	208-230/460	PE324TC-40-4	\$3,728
50	1800	326TC	208-230/460	PE326TC-50-4	\$4,474
60	1800	364TC	208-230/460	PE364TC-60-4	\$6,010
75	1800	365TC	208-230/460	PE365TC-75-4	\$6,831
100	1800	405TC	208-230/460	PE405TC-100-4	\$7,889
125	1800	444TC	460	PE444TC-125-4	\$11,977
150	1800	445TC	460	PE445TC-150-4	\$12,707
200	1800	447TC	460	PE447TC-200-4	\$16,317
250	1800	449TC	460	PE449TC-250-4	\$19,688
300	1800	449TC	460	PE449TC-300-4	\$24,938

NEMA Premium Efficient Motor Performance Data

HP	Full load RPM	Frame	Service Factor	DE Bearing	ODE Bearing	Idle Amps	Full load At 460V	FLT Ft-Lb	LRT %	BDT %	Full Load % Efficiency	Full Load % Power Factor	Weight
1	1740	143T	1.15	6205ZZ	6205ZZ	0.80	1.50	3.02	300	310	85.5	76.0	47
1	1140	145T	1.15	6205ZZ	6205ZZ	1.24	1.70	4.61	260	330	82.5	69.0	52
1.5	3500	143T	1.15	6205ZZ	6205ZZ	0.94	2.00	2.25	260	320	84.0	85.0	46
1.5	1740	145T	1.15	6205ZZ	6205ZZ	1.22	2.22	4.53	320	330	86.5	76.0	55
1.5	1165	182T	1.15	6306ZZ	6306ZZ	1.49	2.30	6.76	240	340	87.5	71.0	95
2	3500	145T	1.15	6205ZZ	6205ZZ	1.20	2.42	3.00	260	280	85.5	90.0	52
2	1740	145T	1.15	6205ZZ	6205ZZ	1.51	2.80	6.04	320	330	86.5	80.0	56
2	1165	184T	1.15	6306ZZ	6306ZZ	1.85	2.90	9.02	230	300	88.5	74.0	103
3	3510	182T	1.15	6306ZZ	6306ZZ	1.40	3.70	4.49	200	330	86.5	89.0	90
3	1745	182T	1.15	6306ZZ	6306ZZ	2.15	4.00	9.03	250	320	89.5	82.0	97
3	1170	213T	1.15	6208ZZ	6208ZZ	2.63	4.20	13.47	200	300	89.5	75.0	136
5	3515	184T	1.15	6306ZZ	6306ZZ	1.75	5.80	7.47	180	320	88.5	92.0	110
5	1745	184T	1.15	6306ZZ	6306ZZ	3.17	6.30	15.05	240	290	89.5	85.0	112
5	1170	215T	1.15	6208ZZ	6208ZZ	3.77	6.70	22.44	200	250	89.5	79.0	162
7.5	3525	213T	1.15	6208ZZ	6208ZZ	2.37	8.80	11.17	180	300	89.5	91.0	145
7.5	1750	213T	1.15	6208ZZ	6208ZZ	3.49	9.00	22.51	195	260	91.7	85.0	150
7.5	1175	254T	1.15	6309	6309	5.20	9.80	33.52	200	240	91.0	79.0	272
10	3525	215T	1.15	6208ZZ	6208ZZ	2.80	11.20	14.90	180	290	90.2	93.0	167
10	1750	215T	1.15	6208ZZ	6208ZZ	4.53	12.00	30.01	190	250	91.7	86.0	167
10	1170	256T	1.15	6309	6306	6.83	13.20	44.89	200	230	91.0	79.0	293
15	3515	254T	1.15	6309	6309	4.35	17.20	22.41	180	290	91.0	91.0	286
15	1750	254T	1.15	6309	6309	7.75	18.00	45.02	185	230	92.4	86.0	297
15	1175	284T	1.15	6310	6310	7.80	18.50	67.05	200	255	91.7	84.0	363
20	3530	256T	1.15	6309	6309	5.17	22.50	29.76	170	250	91.0	89.0	315
20	1750	256T	1.15	6309	6309	9.20	24.00	60.02	200	220	93.0	85.0	315
20	1175	286T	1.15	6310	6310	8.35	24.50	89.40	200	250	91.7	85.0	394
25	3530	284TS	1.15	6310	6310	6.60	28.00	37.20	180	270	91.7	92.0	385
25	1760	284T	1.15	6310	6310	10.50	28.50	74.60	180	260	93.6	90.0	392
25	1175	324T	1.15	6312	6312	11.50	29.50	111.74	200	250	93.0	86.0	508



ISO 9001

**EISA
Compliant**



NEMA Premium Efficient Motor Performance Data

HP	Full load RPM	Frame	Service Factor	DE Bearing	ODE Bearing	Idle Amps	Full load At 460V	FLT Ft-Lb	LRT %	BDT %	Full Load % Efficiency	Full Load % Power Factor	Weight
30	3530	286TS	1.15	6310	6310	7.70	33.70	44.63	180	280	91.7	90.0	409
30	1760	286T	1.15	6311	6311	12.00	34.00	89.52	185	280	93.6	90.0	418
30	1180	326T	1.15	6312	6312	14.76	35.50	133.53	200	235	93.0	85.0	537
40	3540	324TS	1.15	6312	6312	11.80	44.50	59.34	180	280	92.4	92.0	510
40	1760	324T	1.15	6312	6312	11.50	45.00	119.36	180	260	94.1	89.0	519
40	1180	364T	1.15	6313	6313	14.30	46.50	178.03	200	235	94.1	86.0	697
50	3545	326TS	1.15	6312	6312	13.51	55.00	74.08	175	260	93.0	92.0	548
50	1765	326T	1.15	6312	6312	13.70	56.00	148.78	175	250	94.5	90.0	594
50	1180	365T	1.15	6313	6313	20.41	58.00	222.54	200	220	94.1	87.0	752
60	3560	364TS	1.15	6313	6313	12.50	66.00	88.52	180	275	93.6	92.0	704
60	1780	364T	1.15	6313	6313	19.00	67.00	177.03	195	280	95.0	90.0	766
75	3560	365TS	1.15	6313	6313	16.50	82.50	110.65	200	275	93.6	92.0	766
75	1780	365T	1.15	6313	6313	20.50	83.00	221.29	195	260	95.4	90.0	783
100	3560	405TS	1.15	6314	6314	26.60	109.00	147.53	180	280	94.1	92.0	1040
100	1780	405T	1.15	6315	6314	30.20	110.00	295.06	185	220	95.4	90.0	1058
125	3565	444TS	1.15	6314	6314	29.14	135.00	184.15	190	250	95.0	92.0	1247
125	1780	444T	1.15	NU318	6317	38.32	137.00	368.82	180	250	95.4	91.0	1342
125-BB	1780	444T	1.15	6318	6317	38.32	137.00	368.82	180	250	95.4	91.0	1342
150	3570	445TS	1.15	6314	6314	38.00	162.00	220.67	195	245	95.0	92.0	1408
150	1780	445T	1.15	NU318	6317	46.20	164.00	442.58	190	250	95.8	91.0	1672
150-BB	1780	445T	1.15	6318	6317	46.20	164.00	442.58	190	250	95.8	91.0	1672
200	3570	447TS	1.15	6314	6314	49.00	213.00	294.23	185	210	95.4	93.0	1584
200	1780	447T	1.15	NU319	6317	57.94	216.00	590.11	195	240	96.2	91.0	1782
200-BB	1780	447T	1.15	6319	6317	57.94	216.00	590.11	195	240	96.2	91.0	1782
250	3580	449TS	1.15	6314	6314	59.62	266.00	366.76	180	210	95.8	93.0	1870
250	1785	449T	1.15	NU319	6319	74.74	270.00	735.57	190	220	96.2	91.0	1980
250-BB	1785	449T	1.15	6319	6319	74.74	270.00	735.57	190	220	96.2	91.0	1980
300	3570	449TS	1.15	6314	6314	71.57	320.00	441.34	180	210	95.8	93.0	2002
300	1785	449T	1.15	NU319	6319	85.97	325.00	882.69	195	240	96.2	91.0	2112
300-BB	1785	449T	1.15	6319	6319	85.97	325.00	882.69	195	240	96.2	91.0	2112



ISO 9001

**EISA
Compliant**



PREMIUM CRUSHER DESIGN MOTORS



"Buy on Value Not on Price"

- **1-500 Horse Power**
- **1800, 1200, 900 RPM**
- **Inverter Rated**
- **Approved by Department of Energy**



*"Crusher Duty
Soft Starts Available"*

Labyrinth Seal Both Drive End and Opposite Drive End as Standard on 586/7 Frames, Mechanical "V" Seal 143T thru 449T Frames

Class F Insulation System with Class H VPI Epoxy Resin Protection

Inverter Rated 10:1 Variable and 5:1 Constant Torque, (12 Lead) Capable of WYE-DELTA/PART Wind Start

TEFC, IP55 Protection as Standard, Suitable for Shaft Up and Shaft Down Applications

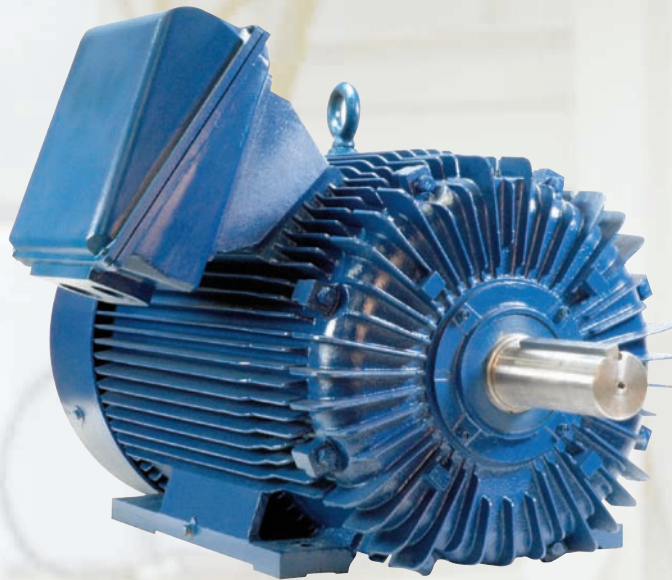
High Grade Silica Electrical Steel Core and Rotor with Extremely Low Core Losses

FC 200 Grade Cast Iron Frame with Solid Cast Iron Full Length Double Punched Feet

Extra High Starting Torques and High Breakdown Torque, NEMA Design C Performance and Higher from 1HP to 500 HP

Cast Iron Fan Covers Standard for 586/7 Frames and an Option for all Motors

Winding Space Heaters and Winding Thermistors Standard on ALL 586/7 Frames



4140 Grade Steel Shaft on 440T and 586/7 U and UZ Frames with Radius Cut Shoulder

Oversized Conduit Box —586/7 Frame T Box Positioned to Increase Air Flow Resulting in Higher Efficiencies and Cooler Operating Temperatures

Heavy Duty Terminal Block for Motor Leads, Heaters and Thermistors Standard on All 586/7 Frames

APPLICATIONS:

Primary, Secondary and Tertiary Crusher with Single or Double Shaft. Jaw Crushers, Roller Crushers, Vertical Shaft Impact Crushers, Gyratory Crushers, Cage Mills, Cone Crushers, Horizontal Shaft Impact Crushers, Hammermills, Grizzly Feeders. Also Recommended for Crusher Feeder and Rock Conveyors.

PREMIUM CRUSHER DESIGN MOTORS NEMA DESIGN C

HP	RPM	FRAME	VOLTS	CATALOG NUMBER	LIST PRICE
1	1800	143T	208-230/460	PE143T-1-4C	\$364
	1200	145T	208-230/460	PE145T-1-6C	\$485
	900	182T	208-230/460	PE182T-1-8C	\$638
1.5	1800	145T	208-230/460	PE145T-1.5-4C	\$445
	1200	182T	208-230/460	PE182T-1.5-6C	\$521
	900	184T	208-230/460	PE184T-1.5-8C	\$794
2	1800	145T	208-230/460	PE145T-2-4C	\$462
	1200	184T	208-230/460	PE184T-2-6C	\$613
	900	213T	208-230/460	PE213T-2-8C	\$1,125
3	1800	182T	208-230/460	PE182T-3-4C	\$542
	1200	213T	208-230/460	PE213T-3-6C	\$828
	900	215T	208-230/460	PE215T-3-8C	\$1,231
5	1800	184T	208-230/460	PE184T-5-4C	\$638
	1200	215T	208-230/460	PE215T-5-6C	\$1,088
	900	254T	208-230/460	PE254T-5-8C	\$1,885
7.5	1800	213T	208-230/460	PE213T-7.5-4C	\$922
	1200	254T	208-230/460	PE254T-7.5-6C	\$1,497
	900	256T	208-230/460	PE256T-7.5-8C	\$2,075
10	1800	215T	208-230/460	PE215T-10-4C	\$1,108
	1200	256T	208-230/460	PE256T-10-6C	\$1,897
	900	284T	208-230/460	PE284T-10-8C	\$3,001
15	1800	254T	208-230/460	PE254T-15-4C	\$1,553
	1200	284T	208-230/460	PE284T-15-6C	\$2,541
	900	286T	208-230/460	PE286T-10-8C	\$3,884
20	1800	256T	208-230/460	PE256T-20-4C	\$1,847
	1200	286T	208-230/460	PE286T-20-6C	\$3,020
	900	324T	208-230/460	PE324T-20-8C	\$4,553
25	1800	284T	208-230/460	PE284T-25-4C	\$2,275
	1200	324T	208-230/460	PE324T-25-6C	\$3,427
	900	326T	208-230/460	PE326T-25-8C	\$5,114
30	1800	286T	208-230/460	PE286T-30-4C	\$2,652
	1200	326T	208-230/460	PE326T-30-6C	\$4,112
	900	364T	208-230/460	PE364T-30-8C	\$6,141
40	1800	324T	208-230/460	PE324T-40-4C	\$3,550
	1200	364T	208-230/460	PE364T-40-6C	\$5,094
	900	365T	208-230/460	PE365T-40-8C	\$7,624
50	1800	326T	208-230/460	PE326T-50-4C	\$4,261
	1200	365T	208-230/460	PE365T-50-6C	\$6,386
	900	404T	208-230/460	PE404T-50-8C	\$9,001
60	1800	364T	208-230/460	PE364T-60-4C	\$5,724
	1200	404T	208-230/460	PE404T-60-6C	\$7,035
	900	405T	208-230/460	PE405T-60-8C	\$10,229

HP	RPM	FRAME	VOLTS	CATALOG NUMBER	LIST PRICE
75	1800	365T	208-230/460	PE365T-75-4C	\$6,506
	1200	405T	208-230/460	PE405T-75-6C	\$7,836
	900	444T	208-230/460	PE444T-75-8C	\$14,941
100	1800	405T	208-230/460	PE405T-100-4C	\$7,513
	1200	444T	208-230/460	PE444T-100-6C	\$11,338
	900	445T	208-230/460	PE405T-100-8C	\$16,096
125	1800	444T	460	PE444T-125-4C	\$11,407
	1200	445T	460	PE445T-125-6C	\$13,951
	900	447T	460	PE447T-125-8C	\$20,681
150	1800	445T	460	PE445T-150-4C	\$12,102
	1200	447T	460	PE447T-150-6C	\$16,717
	900	449T	460	PE449T-150-8C	\$23,544
200	1800	447T	460	PE447T-200-4C	\$15,540
	1200	449T	460	PE449T-200-6C	\$19,738
	900	449T	460	PE449T-200-8C	\$26,468
250	1800	449T	460	PE449T-250-4C	\$18,750
	1200	449T	460	PE449T-250-6C	\$21,168
	1200	587UZ	460	PE587UZ-250-6A	\$29,795
	1200	587U	460	PE587U-250-6C	\$28,293
	900	587U	460	PE587U-250-8C	\$44,318
300	1800	449T	460	PE449T-300-4C	\$23,750
	1800	587UZ	460	PE587UZ-300-4A	\$27,575
	1800	587U	460	PE587U-300-4C	\$26,198
	1200	449T	460	PE449T-300-6C	\$25,161
	1200	587UZ	460	PE587UZ-300-6A	\$32,100
	1200	587U	460	PE587U-300-6C	\$30,572
350	900	587U	460	PE587U-300-8C	\$46,006
	1800	587UZ	460	PE587UZ-350-4A	\$28,709
	1800	587U	460	PE587U-350-4C	\$27,342
	1200	587UZ	460	PE587UZ-350-6A	\$33,105
	1200	587U	460	PE587U-350-6C	\$31,529
	400	1800	587UZ	460	PE587UZ-400-4A
1800		587U	460	PE587U-400-4C	\$29,389
1200		587UZ	460	PE587UZ-400-6A	\$35,775
1200		587U	460	PE587U-400-6C	\$34,071
450	1800	587UZ	460	PE587UZ-450-4A	\$36,359
	1200	587U	460	PE587U-450U-6C	\$37,413
500	1800	587UZ	460	PE587UZ-500-4A	\$39,608
	1800	587U	460	PE587U-500-4C	\$37,628
	1200	587UZ	460	PE587UZ-500-6A	\$42,220



ISO 9001

**EISA
Compliant**

Premium Crusher Design Performance Data

HP	Full load RPM	Frame	Service Factor	DE Bearing	ODE Bearing	Idle Amps	Full load At 460V	FLT Ft-Lb	LRT %	BDT %	Full Load % Efficiency	Full Load % Power Factor	Weight
1	1740	143T	1.15	6205ZZ	6205ZZ	0.80	1.50	3.02	290	300	82.5	76.0	40
1	1140	145T	1.15	6205ZZ	6205ZZ	1.24	1.80	4.61	280	320	80.0	66.0	48
1	860	182T	1.15	6306ZZ	6306ZZ	2.10	2.30	6.11	135	215	74.0	70.0	64
1.5	1740	145T	1.15	6205ZZ	6205ZZ	1.22	2.20	4.53	300	310	84.0	76.0	48
1.5	1165	182T	1.15	6306ZZ	6306ZZ	1.49	2.25	6.76	280	350	85.5	67.0	90
1.5	860	184T	1.15	6306ZZ	6306ZZ	2.50	3.40	9.16	130	210	74.0	56.0	91
2	1740	145T	1.15	6205ZZ	6205ZZ	1.51	2.80	6.04	300	300	84.0	80.0	51
2	1165	184T	1.15	6306ZZ	6306ZZ	1.85	3.10	9.02	255	310	86.5	71.0	99
2	870	213T	1.15	6208ZZ	6208ZZ	2.25	3.20	12.07	130	210	82.5	71.0	145
3	1745	182T	1.15	6306ZZ	6306ZZ	2.15	4.00	9.03	230	300	87.5	82.0	89
3	1170	213T	1.15	6208ZZ	6208ZZ	2.63	4.40	13.47	220	300	87.5	74.0	129
3	870	215T	1.15	6208ZZ	6208ZZ	3.00	4.70	18.11	130	205	84.0	78.0	165
5	1745	184T	1.15	6306ZZ	6306ZZ	3.17	6.50	15.05	230	280	87.5	82.0	101
5	1170	215T	1.15	6208ZZ	6208ZZ	3.77	7.10	22.44	240	290	87.5	76.0	157
5	880	254T	1.15	6309	6309	5.20	7.50	29.84	130	205	85.5	79.0	260
7.5	1750	213T	1.15	6208ZZ	6208ZZ	3.49	9.20	22.51	200	260	89.5	85.0	136
7.5	1175	254T	1.15	6309	6309	5.20	10.30	33.52	220	250	89.5	77.0	250
7.5	880	256T	1.15	6310	6310	7.50	11.30	44.76	180	220	85.5	73.0	305
10	1750	215T	1.15	6208ZZ	6208ZZ	4.53	12.00	30.01	190	240	89.5	86.0	159
10	1170	256T	1.15	6309	6306	6.83	13.40	44.89	190	240	89.5	79.0	274
10	880	284T	1.15	6310	6310	9.00	14.30	59.68	200	220	88.5	74.0	395
15	1750	254T	1.15	6309	6309	7.75	18.20	45.02	180	220	91.0	84.0	271
15	1175	284T	1.15	6310	6310	7.80	18.70	67.05	200	250	90.2	84.0	350
15	880	286T	1.15	6310	6310	15.00	21.50	89.52	125	200	88.5	74.0	456
20	1750	256T	1.15	6309	6309	9.20	24.20	60.02	180	200	91.0	85.0	306
20	1175	286T	1.15	6310	6310	8.35	24.90	89.40	210	250	90.2	84.0	372
20	880	324T	1.15	6312	6312	19.00	27.50	119.36	125	200	89.5	88.0	547
25	1760	284T	1.15	6310	6310	10.50	30.00	74.60	180	260	92.4	85.0	372
25	1175	324T	1.15	6312	6312	11.50	30.20	111.74	200	245	91.7	85.0	495
25	880	326T	1.15	6312	6312	24.00	34.40	149.20	125	200	89.5	76.0	599
30	1760	286T	1.15	6311	6311	12.00	35.30	89.52	200	280	92.4	86.0	387
30	1180	326T	1.15	6312	6312	14.76	36.50	133.53	200	230	91.7	85.0	519
30	880	364T	1.15	6314	6314	26.00	42.50	179.05	125	200	91.0	72.0	789
40	1760	324T	1.15	6312	6312	11.50	46.60	119.36	185	265	93.0	87.0	521
40	1180	364T	1.15	6313	6313	14.30	47.00	178.03	200	230	91.7	86.0	697
40	880	365T	1.15	6314	6314	27.00	57.20	238.73	125	200	91.0	72.0	881



ISO 9001

**EISA
Compliant**

Premium Crusher Design Performance Data

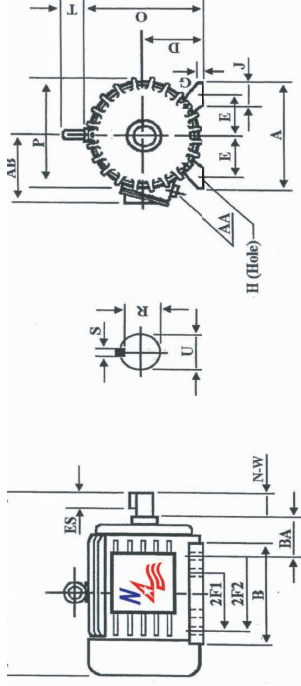
HP	Full load RPM	Frame	Service Factor	DE Bearing	ODE Bearing	Idle Amps	Full load At 460V	FLT Ft-Lb	LRT %	BDT %	Full Load % Efficiency	Full Load % Power Factor	Weight
50	1765	326T	1.15	6312	6312	13.70	58.30	148.78	190	265	93.0	87.0	565
50	1180	365T	1.15	6313	6313	20.41	58.00	222.54	190	210	93.0	87.0	740
50	885	404T	1.15	6316	6316	38.00	67.20	296.72	160	200	91.7	76.0	1057
60	1780	364T	1.15	6313	6313	19.00	70.00	177.03	180	255	93.6	86.0	730
60	1180	404T	1.15	6315	6314	21.90	68.00	267.05	190	230	93.6	92.0	880
60	885	405T	1.15	6316	6316	39.00	78.50	356.07	125	200	91.7	78.0	1057
75	1780	365T	1.15	6313	6313	20.50	88.60	221.29	175	230	94.1	86.0	774
75	1180	405T	1.15	6315	6314	30.24	84.00	333.81	195	220	93.6	90.0	1050
75	980	444T	1.15	NU318	6316	45.00	102.00	401.94	125	200	93.0	74.0	1432
100	1780	405T	1.15	6315	6314	30.20	113.50	295.06	190	220	94.5	88.0	1062
100	1180	444T	1.15	NU318	6317	40.20	113.00	445.08	195	210	94.1	89.0	1316
100	890	445T	1.15	NU318	6316	49.00	134.20	590.11	125	200	93.0	75.0	1465
125	1780	444T	1.15	NU318	6317	38.32	147.00	368.82	180	240	94.5	85.0	1364
125	1180	445T	1.15	NU318	6317	48.60	141.00	556.36	190	200	94.1	89.0	1443
125	890	447T	1.15	NU320	6316	50.00	169.00	737.64	120	200	92.4	74.0	1575
150	1780	445T	1.15	NU318	6317	46.20	171.00	442.58	170	220	95.0	87.0	1695
150	1180	447T	1.15	NU319	6318	58.70	165.00	667.63	190	200	95.0	90.0	1679
150	885	449T	1.15	NU320	6316	60.00	202.80	890.17	120	200	93.6	74.0	1905
200	1780	447T	1.15	NU319	6317	57.94	262.00	590.11	190	230	95.0	93.0	1800
200	1185	449T	1.15	NU319	6318	58.00	220.00	886.41	200	210	95.0	90.0	2024
250	1785	449T	1.15	NU319	6319	74.74	273.40	735.57	185	220	95.0	89.4	2595
250	1190	449T	1.15	NU322	6319	96.80	288.80	1103.36	225	260	95.0	84.6	2789
250	1190	587UZ	1.15	NU324	6319	96.50	285.00	1097.20	200	263	95.6	85.4	5216
250	1190	587U	1.15	NU324	6319	96.50	285.00	1097.20	200	263	95.6	85.4	5216
300	1785	449T	1.15	NU319	6319	85.97	318.40	882.69	195	240	95.4	90.9	2759
300	1789	587UZ	1.15	NU324	6319	96.50	325.10	868.10	177	254	96.0	88.7	4625
300	1789	587U	1.15	NU324	6319	96.50	325.10	868.10	177	254	96.0	88.7	4625
300	1185	449T	1.15	NU322	6319	118.80	341.10	1329.62	210	250	95.0	85.2	2948
300	1189	587UZ	1.15	NU324	6319	127.30	338.30	1305.90	132	247	95.4	85.8	5342
300	1189	587U	1.15	NU324	6319	127.30	338.30	1305.90	132	247	95.4	85.8	5342
350	1780	587UZ	1.15	NU324	6319	110.10	380.00	1025.40	237	270	96.4	89.3	4857
350	1780	587U	1.15	NU324	6319	110.10	380.00	1025.40	237	270	96.4	89.3	4857
350	1190	587UZ	1.15	NU324	6319	152.40	397.80	1542.00	235	265	95.8	85.6	5705
350	1190	587U	1.15	NU324	6319	152.40	397.80	1542.00	235	265	95.8	85.6	5705
400	1789	587UZ	1.15	NU324	6319	116.80	440.20	1183.80	223	252	96.3	89.0	4982
400	1789	587U	1.15	NU324	6319	116.80	440.20	1183.80	223	252	96.3	89.0	4982
400	1190	587U	1.15	NU324	6319	161.40	454.00	1780.70	214	234	96.2	86.4	5940
450	1789	587U	1.15	NU324	6319	128.10	498.00	1319.83	200	220	95.0	89.0	5424
450	1189	587UZ	1.15	NU324	6319	181.80	504.70	1988.50	316	265	96.5	86.4	5930
500	1792	587UZ	1.15	NU324	6319	141.10	551.80	1478.10	218	280	96.8	88.1	6140
500	1792	587U	1.15	NU324	6319	141.40	551.80	1478.10	218	280	96.8	88.1	6140
500	1189	587UZ	1.15	NU324	6319	202.00	563.10	2224.10	236	275	96.5	86.6	5970



ISO 9001

**EISA
Compliant**

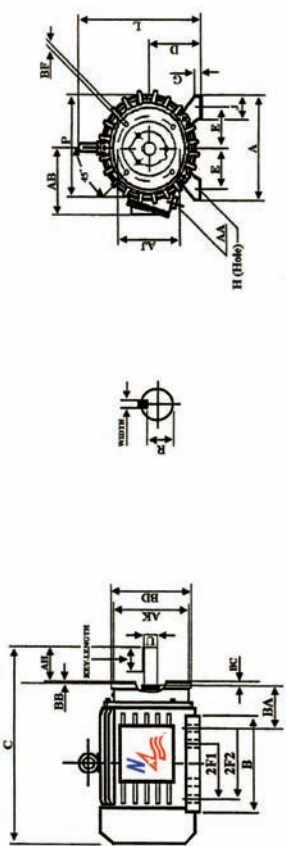
Premium Efficient, Hostile Duty & Crusher Duty Mounting Dimensions Foot Mount



FRAME	E	2F	AB	H	BA	AA	A	B	C	D	G	J	O	P	R	S	T	ES	N-W	U
143T	2.75	4.00	6.10	0.34	2.25	0.75NPT	7.00	5.2	12.60	3.50	0.5	1.42	7.10	6.95	0.771	0.188	NA	1.41	2.25	0.875
143T	2.75	5.00	6.10	0.34	2.25	0.75NPT	7.00	6.2	13.60	3.50	0.5	1.42	7.10	6.95	0.771	0.188	NA	1.41	2.25	0.875
182T	3.75	4.50	7.50	0.41	2.75	0.75NPT	9.50	6.3	15.10	4.50	0.7	1.69	9.10	8.70	0.986	0.250	1.60	1.78	2.75	1.125
184T	3.75	5.50	7.50	0.41	2.75	0.75NPT	9.50	7.3	16.10	4.50	0.7	1.69	9.10	8.70	0.986	0.250	1.60	1.78	2.75	1.125
213T	4.25	5.50	8.30	0.41	3.50	1.00NPT	11.00	7.9	18.90	5.25	0.8	2.40	10.50	10.20	1.201	0.312	1.90	2.41	3.38	1.375
215T	4.25	7.00	8.30	0.41	3.50	1.00NPT	11.00	9.4	20.40	5.25	0.8	2.40	10.50	10.20	1.201	0.312	1.90	2.41	3.38	1.375
254T	5.00	8.25	10.10	0.53	4.25	1.25NPT	13.00	10.4	23.20	6.25	0.8	2.76	13.00	12.40	1.416	0.375	2.20	2.91	4.00	1.625
256T	5.00	10.00	10.10	0.53	4.25	1.25NPT	13.00	12.2	25.00	6.25	0.8	2.76	13.00	12.40	1.416	0.375	2.20	2.91	4.00	1.625
284T	5.50	9.50	11.30	0.53	4.75	1.5NPT	14.00	11.7	26.60	7.00	0.8	2.76	14.50	14.00	1.591	0.500	2.20	3.28	4.62	1.875
284TS	5.50	9.50	11.30	0.53	4.75	1.5NPT	14.00	11.7	25.20	7.00	0.8	2.76	14.50	14.00	1.416	0.375	2.20	1.91	3.25	1.625
286T	5.50	11.00	11.30	0.53	4.75	1.5NPT	14.00	13.2	28.10	7.00	0.8	2.76	14.50	14.00	1.416	0.375	2.20	1.91	3.25	1.625
286TS	5.50	11.00	11.30	0.53	4.75	1.5NPT	14.00	13.2	26.70	7.00	0.8	2.76	14.50	14.00	1.416	0.375	2.20	1.91	3.25	1.625
324T	6.25	10.50	12.30	0.66	5.25	2.0NPT	15.50	13.2	29.80	8.00	1.0	2.76	15.90	15.70	1.845	0.500	2.60	3.91	5.25	2.125
324TS	6.25	10.50	12.30	0.66	5.25	2.0NPT	15.50	13.2	28.30	8.00	1.0	2.76	15.90	15.70	1.591	0.500	2.60	2.03	3.75	1.875
326T	6.25	12.00	12.30	0.66	5.25	2.0NPT	15.50	14.7	31.30	8.00	1.0	2.76	15.90	15.70	1.845	0.500	2.60	3.91	5.25	2.125
326TS	6.25	12.00	12.30	0.66	5.25	2.0NPT	15.50	14.7	29.80	8.00	1.0	2.76	15.90	15.70	1.591	0.500	2.60	2.03	3.75	1.875
364T	7.00	11.25	14.60	0.66	5.88	3.0NPT	17.10	14.4	32.50	9.00	1.1	2.95	18.10	17.60	2.021	0.625	2.60	4.28	5.88	2.375
364TS	7.00	11.25	14.60	0.66	5.88	3.0NPT	17.10	14.4	30.04	9.00	1.1	2.95	18.10	17.60	1.591	0.500	2.60	2.03	3.75	1.875
365T	7.00	12.25	14.60	0.66	5.88	3.0NPT	17.10	15.4	33.50	9.00	1.1	2.95	18.10	17.60	2.021	0.625	2.60	4.28	5.88	2.375
365TS	7.00	12.25	14.60	0.66	5.88	3.0NPT	17.10	15.4	31.40	9.00	1.1	2.95	18.10	17.60	1.591	0.500	2.60	2.03	3.75	1.875
404T	8.00	12.25	15.60	0.81	6.62	3.0NPT	19.30	16.4	36.70	10.0	1.2	3.15	19.80	19.10	2.450	0.750	3.00	5.65	7.25	2.875
404TS	8.00	12.25	15.60	0.81	6.62	3.0NPT	19.30	16.4	35.20	10.0	1.2	3.15	19.80	19.10	1.845	0.500	3.00	2.78	4.25	2.125
405T	8.00	13.75	15.60	0.81	6.62	3.0NPT	19.30	17.9	38.20	10.0	1.2	3.15	19.80	19.10	2.450	0.750	3.00	5.65	7.25	2.875
405TS	8.00	13.75	15.60	0.81	6.62	3.0NPT	19.30	17.9	35.20	10.0	1.2	3.15	19.80	19.10	1.845	0.500	3.00	2.78	4.25	2.125
444T	9.00	14.50	16.60	0.81	7.50	3.0NPT	21.70	22.9	44.30	11.0	1.3	3.35	22.10	21.60	2.880	0.875	3.00	6.91	8.50	3.375
444TS	9.00	14.50	16.60	0.81	7.50	3.0NPT	21.70	22.9	40.60	11.0	1.3	3.35	22.10	21.60	2.021	0.625	3.00	3.03	4.75	2.375
445T	9.00	16.50	16.60	0.81	7.50	3.0NPT	21.70	22.9	44.30	11.0	1.3	3.35	22.10	21.60	2.880	0.875	3.00	6.91	8.50	3.375
445TS	9.00	16.50	16.60	0.81	7.50	3.0NPT	21.70	22.9	40.60	11.0	1.3	3.35	22.10	21.60	2.021	0.625	3.00	3.03	4.75	2.375
447T	9.00	20.00	16.60	0.81	7.50	3.0NPT	21.70	26.4	47.80	11.0	1.3	3.75	22.10	21.60	2.880	0.875	3.00	6.91	8.50	3.375
447TS	9.00	20.00	16.60	0.81	7.50	3.0NPT	21.70	26.4	44.10	11.0	1.3	3.75	22.10	21.60	2.021	0.625	3.00	3.03	4.75	2.375
449T	9.00	25.00	16.60	0.81	7.50	3.0NPT	21.70	31.4	52.80	11.0	1.3	3.75	22.10	21.60	2.880	0.875	3.00	6.91	8.50	3.375
449TS	9.00	25.00	16.60	0.81	7.50	3.0NPT	21.70	31.4	49.10	11.0	1.3	3.75	22.10	21.60	2.021	0.625	3.00	3.03	4.75	2.375
587U	12.00	25.00	26.97	1.10	10	2X3.0NPT	28.6	29.53	69.29	14.5	1.969	5.709	33.47	28.00	3.378	1.000	5.00	10.000	11.61	3.875
587UZ	12.00	25.00	26.97	1.10	10	2X3.0NPT	28.6	29.53	69.29	14.5	1.969	5.709	33.47	28.00	3.378	1.000	5.00	10.000	11.61	4.375

Note The 587U frame motors are dual drilled 586/7U. 500HP motors are drilled 587/8/9/10U with a 79.13" C Dim.

Premium Efficient, Hostile Duty & Crusher Duty Mounting Dimensions C-Flange Mount



C-FACE MOUNTING DIMENSIONS

FRAME	AJ	AK	BA	MIN. BB	BC	MAX BD	BOLT HOLES	BOLT DIM.	DEPTH OF HOLE	U	AH	R	KEY LENGTH	KEY WIDTH
143TC - 145TC	5.875	4.50	2.75	0.16	0.12	6.50	4	0.375-16	0.56	0.875	2.12	0.771	1.41	0.188
182TC - 184TC	7.250	8.50	3.50	0.25	0.12	9.00	4	0.500-13	0.75	1.125	2.62	0.986	1.78	0.250
213TC - 215TC	7.250	8.50	4.25	0.25	0.25	9.00	4	0.500-13	0.75	1.375	3.12	1.201	2.41	0.312
254TC- 256TC	7.250	8.50	4.75	0.25	0.25	10.00	4	0.500-13	0.75	1.625	3.75	1.416	2.91	0.375
284TC - 286TC	9.00	10.50	4.75	0.25	0.25	11.25	4	0.500-13	0.75	1.875	4.38	1.591	3.28	0.500
284TSC - 286TSC	9.00	10.50	4.75	0.25	0.25	11.25	4	0.500-13	0.75	1.625	3.00	1.416	1.91	0.375
324TC - 326TC	11.00	12.50	5.25	0.25	0.25	14.00	4	0.625-11	0.94	2.125	5.00	1.845	3.91	0.500
324TSC - 326TSC	11.00	12.50	5.25	0.25	0.25	14.00	4	0.625-11	0.94	1.875	3.50	1.591	2.03	0.500
364TC - 365TC	11.00	12.50	5.88	0.25	0.25	14.00	8	0.625-11	0.94	2.375	5.62	2.021	4.28	0.625
364TSC - 365TSC	11.00	12.50	5.88	0.25	0.25	14.00	8	0.625-11	0.94	1.875	3.50	1.591	2.03	0.500
404TC - 405TC	11.00	12.50	6.62	0.25	0.25	15.50	8	0.625-11	0.94	2.875	7.00	2.450	5.65	0.750
404TSC - 405TSC	11.00	12.50	6.62	0.25	0.25	15.50	8	0.625-11	0.94	2.125	4.00	1.845	2.78	0.500
444TC - 445TC	14.00	16.00	7.50	0.25	0.25	18.00	8	0.625-11	0.94	3.375	8.25	2.880	6.91	0.875
444TSC - 445TSC	14.00	16.00	7.50	0.25	0.25	18.00	8	0.625-11	0.94	3.375	4.50	2.021	3.03	0.625
447TC - 449TC	14.00	16.00	7.50	0.25	0.25	18.00	8	0.625-11	0.94	3.375	8.25	2.880	6.91	0.875
447TSC - 449TSC	14.00	16.00	7.50	0.25	0.25	18.00	8	0.625-11	0.94	3.375	4.50	2.021	3.03	0.625

MOTOR SLIDE BASES

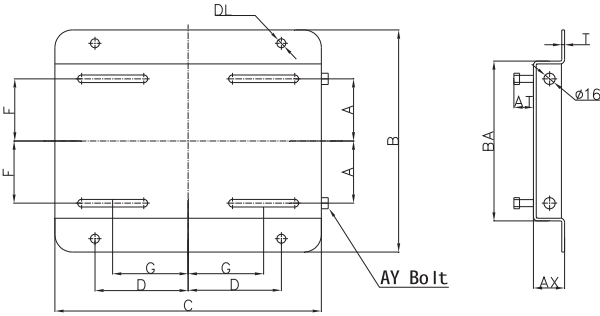


FEATURES:

- * Bases are provided with washers
- * Primed with Oven-Baked Primer for easy painting
- * All "D" bolts (or Motor mounting bolts) are welded into position to prevent spinning and dropping from the slots
- * All "D" bolts are fixed to the exact foot pattern of the motor to aid in easier motor installation
- * All sizes are double-adjusting screw style

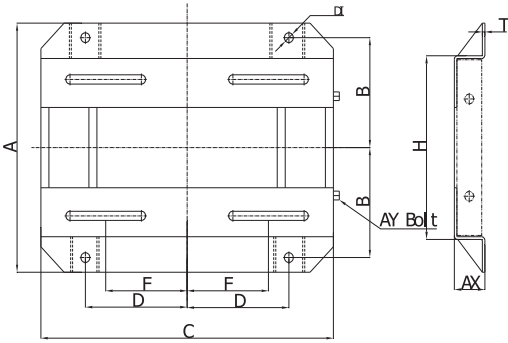
Model Number	Weight (Lbs.)	Multiplier Symbol	List Price
W56	3	M11	\$18
W143T	6	M11	\$35
W145T	7	M11	\$35
W182T	10	M11	\$48
W184T	10	M11	\$48
W213T	15	M11	\$71
W215T	17	M11	\$71
W254T	19	M11	\$97
W256T	20	M11	\$97
W284T	24	M11	\$109
W286T	25	M11	\$109
W324T	35	M11	\$159
W326T	36	M11	\$159
W364T	49	M11	\$221
W365T	50	M11	\$221
W404T	66	M11	\$271
W405T	68	M11	\$271
W444T	74	M11	\$307
W445T	76	M11	\$307
W447T	102	M11	\$406
W449T	105	M11	\$406
W505T	137	M11	\$630

MOTOR SLIDE BASE DIMENSIONS 56 - 286T

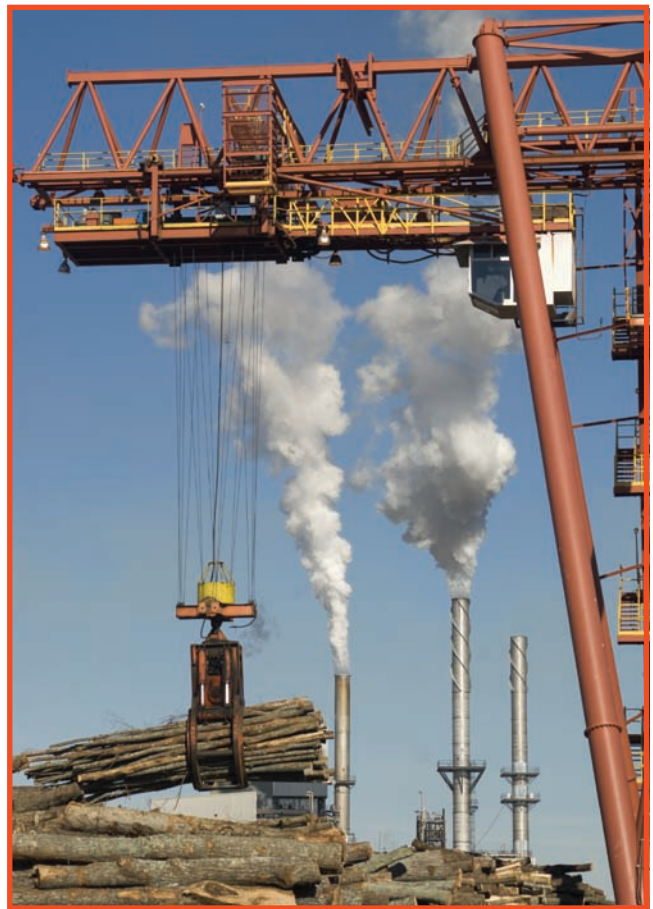


FRAME NO.	A	B	C	D	G	F	BA	T	AX	AY BOLT	AT
W56	2 7/8	6 1/2	10 5/8	3 13/16	2 7/16	1 1/2	4 1/2	.078	1 1/8	3/8*4	7/8
W143T	3 3/8	7 1/2	10 1/2	3 3/4	2 3/4	2	5 1/2	.119	1 1/8	3/8*4	13/16
W145T	3 7/8	8 1/2	10 1/2	3 3/4	2 3/4	2 1/2	6 1/2	.119	1 1/8	3/8*4	13/16
W182T	4 1/4	9 1/2	12 3/4	4 1/2	3 3/4	2 1/4	6 1/2	.134	1 1/2	1/2*6	1 1/2
W184T	4 3/4	10 1/2	12 3/4	4 1/2	3 3/4	2 3/4	7 1/2	.134	1 1/2	1/2*6	1 1/2
W213T	4 3/4	11	15	5 1/4	4 1/4	2 3/4	7 1/2	.164	1 3/4	1/2*6	1 1/2
W215T	5 1/2	12 1/2	15	5 1/4	4 1/4	3 1/2	9	.164	1 3/4	1/2*6	1 1/2
W254T	6 5/8	15 1/8	17 3/4	6 1/4	5	4 1/8	10 3/4	3/16	2	5/8*6	1 7/16
W256T	7 1/2	16 7/8	17 3/4	6 1/4	5	5	12 1/2	3/16	2	5/8*6	1 7/16
W284T	7 1/2	16 7/8	19 3/4	7	5 1/2	4 3/4	12 1/2	3/16	2	5/8*6	1 11/16
W286T	8 1/4	18 3/8	19 3/4	7	5 1/2	5 1/2	14	3/16	2	5/8*6	1 11/16

MOTOR SLIDE BASE DIMENSIONS 324T - 505U FRAME



FRAME NO.	A	B	C	D	F	H	T	AX	DI	AY BOLT
W324T	19 1/4	8 1/2	22 3/4	8	6 1/4	14	3/16	2 1/2	3/4	3/4*9
W326T	20 3/4	9 1/4	22 3/4	8	6 1/4	15 1/2	3/16	2 1/2	3/4	3/4*9
W364T	20 1/2	9 1/8	25 1/2	9	7	15 1/2	1/4	2 1/2	3/4	3/4*9
W365T	21 1/2	9 5/8	25 1/2	9	7	16 1/2	1/4	2 1/2	3/4	3/4*9
W404T	22 3/8	9 7/8	28 3/4	10	8	16 1/2	1/4	3	7/8	3/4*11
W405T	23 7/8	10 5/8	28 3/4	10	8	18	1/4	3	7/8	3/4*11
W444T	24 5/8	11	31 1/4	11	9	19 1/4	1/4	3	7/8	3/4*11
W445T	26 5/8	12	31 1/4	11	9	21 1/4	1/4	3	7/8	3/4*11
W447T	30 1/8	13 3/4	31 1/4	11	9	24 3/4	5/16	3	7/8	3/4*11
W449T	35 1/8	16 1/4	31 1/4	11	9	29 3/4	5/16	3	7/8	3/4*11
W505T	30	13 1/2	35	12 1/2	10	22 3/4	5/16	3 1/2	1	7/8*12



Data subject to change without notice

Distributed by:

North American Electric, Inc. • P.O. Drawer 130 • 350 Vaiden Drive • Hernando, MS 38632
Toll Free: 800-884-0404 • Phone: 662-429-8049 • Fax: 662-429-8546 • Sales: 800-884-0405
www.naemotors.com • e-mail: sales@naemotors.com

Reno location opening in February 2011

